

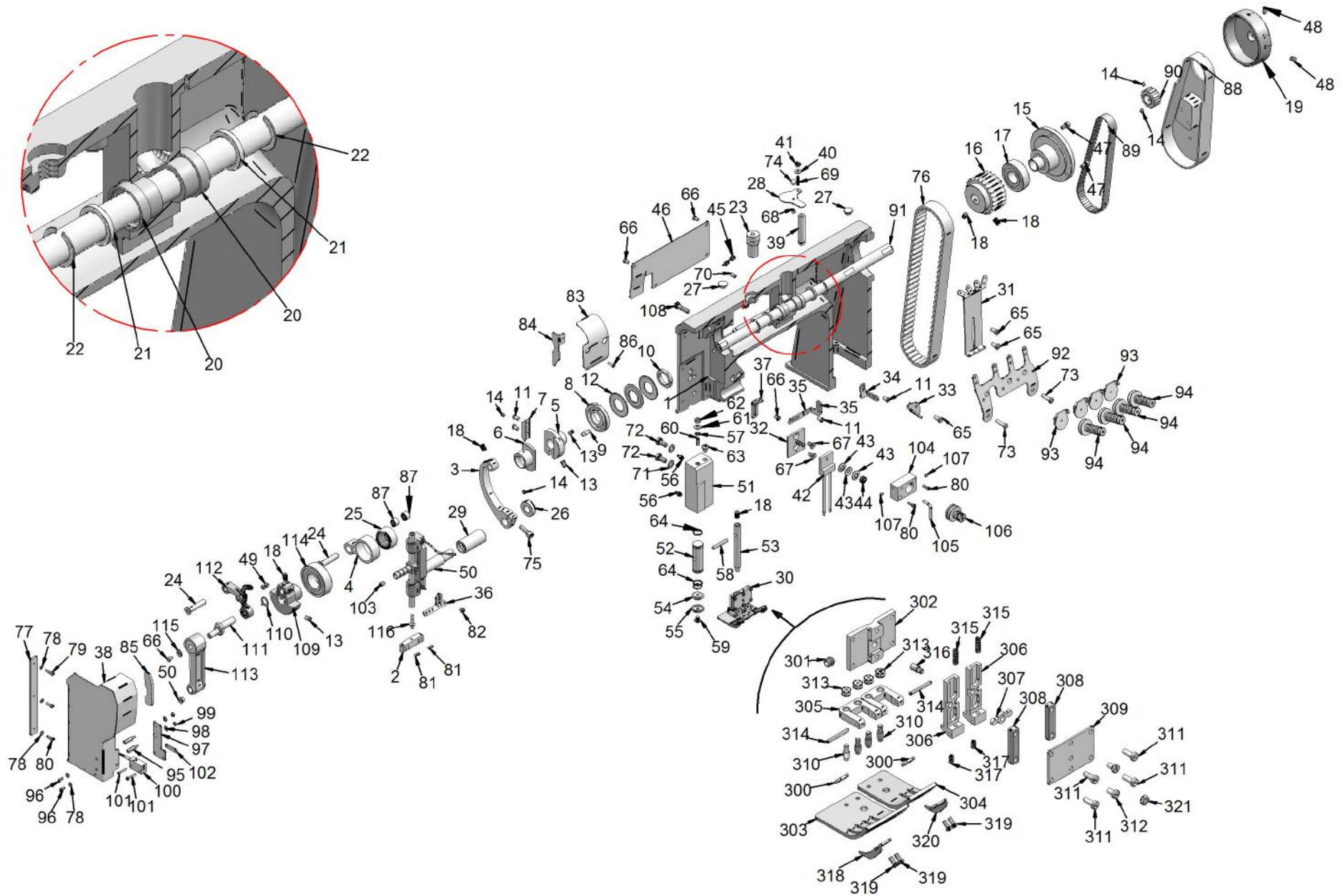
# 3022WB201

## CATALOGO RICAMOBILI SPARE PARTS CATALOGUE





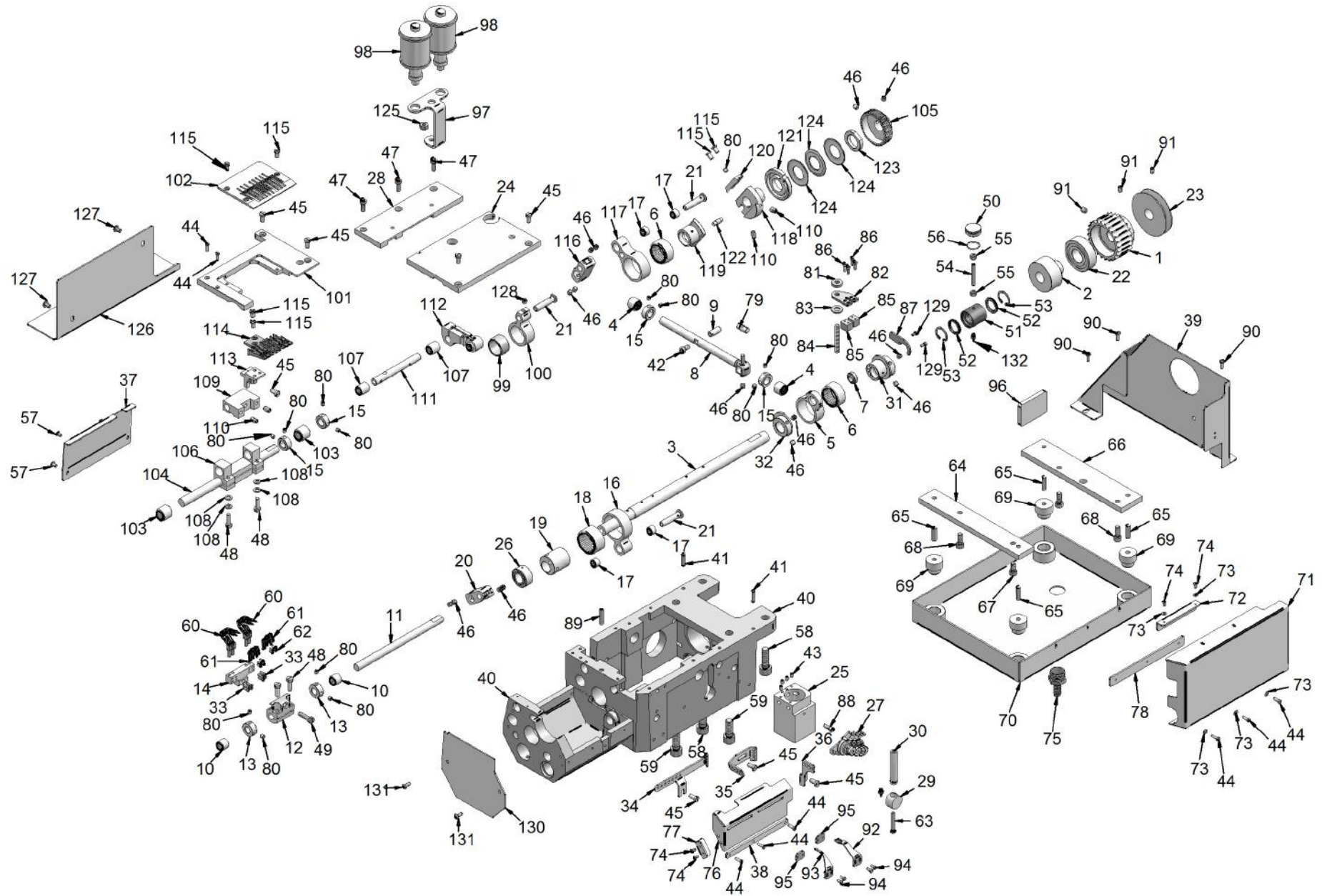
Descrizione	Description	Pagina/Page
TESTA SUPERIORE	UPPER HEAD	4
TESTA INFERIORE	LOWER HEAD	8
TESTA AGGIUNTA	AUXILIARY HEAD	12
TAVOLO E SOSTEGNO	TABLE AND STAND	15
PULLER E ZEROMAX	PULLER E ZEROMAX	18



Pos	Codice	Descrizione	Description
1	3022-003	FUSIONE SUPERIORE	SUPERIOR CASTING
2	3022-144A	MORSETTO AGHI 1" 3/8 4 AGHI	NEEDLE CLAMP 1" 3/8 CHAIN STITCH 4 NEEDL
3	3022-068	LEVA BASCULA BARRA	BAR BALANCING LEVER
4	3022-039	BIELLA ECCENTRICO SUPERIORE	UPPER CAM CONNECTING ROD
5	3022-074A	SUPPORTO ESTERNO ECCENTRICO	CAM EXTERNAL SUPPORT
6	3022-074D	SLITTA ECCENTRICO TESTA	HEAD CAM SLIDE
7	3022-074B	FISSAGGIO SLITTA ECCENTRICO	CAM FIXING SLIDE
8	3022-074C	CAMME ECCENTRICO TESTA	HEAD ECCENTRIC CAMS
9	3022-074E	PERNO SLITTA ECCENTRICO TESTA	HEAD CAM SLIDING PIN
10	3022-074F	RASAMENTO ECCENTRICO TESTA	HEAD CAM ADJUSTMENT TO A GIVEN CLEARANCE
11	17200100-2	VITE FISSA PLACCA AGO	FIXING NEEDLE PLATE SCREW
12	M20RB	RONDELLA A TAZZA	CUP WASHER
13	STEI M6x075x10G	GRANO M6X0.75X10	GRUB SCREW M6X0.75X10
14	STEI M5x5G	GRANO M5X5	GRUB SCREW M5X5
15	3022-005	FLANGIA SUPPORTO PIGNONE SUPER	UPPER PINION SUPPORT FLANGE
16	3022-035	PIGNONE 8M-20 Z24	PINION 8M-20 Z24
17	6204ZZ	CUSCINETTO	BEARING
18	STEI M6X075X10G	GRANO M6X0.75X10	GRUB SCREW M6X0.75X10
19	3022-135	VOLANTINO 3022	HANDWHEEL 3022
20	3022-352	BOCCOLA TESTA ALBERO PRINCIPAL	MAIN SHAFT HEAD FERRULE
21	G16X22X3A	ANELLO DI TENUTA VERDE	GREEN SEAL RING
22	SEG16/I	SEEGER PER FORO DIAM. 16 (PER INTERNI)	SEEGER RING FOR 16 DIAM. (INDOOR) HOLE
23	3022K057	BLOCCAGGIO	BLOCK
24	1650/929	PERNO PIVOT BILANCERE TESTA	HEAD BALANCER PIVOT PIN
25	HK2516.2RS	CUSCINETTO	BEARING
26	3022-133	RASAMENTO LEVA MOVIMENTO	MOVEMENT LEVER ADJUSTMENT TO A GIVEN CLE
27	GPN300F042	TAPPO SUPERIORE TESTA 3022	3022 HEAD UPPER BLACK CAP
28	3022-153A	TAPPO SERBATOI	TANKS CAP
29	3022-203	BRONZINA SUPPORTO BARRA AGO	NEEDLE BAR SUPPORT BRASS
30	3022K306C	PIEDINO CPL 2" CS/LS	COMPLETE PRESSER FOOT 2" CHAIN STITCH/L
31	3022-042	PASSAFILO PRINCIPALE TESTA	HEAD MAIN THREAD GUIDE
32	068C302	SUPPORTO SOFFIATORE	BLOWER BRACKET
33	3022-043	PASSAFILO DESTRO BASAMENTO	BED PLATE RIGHT THREAD GUIDE
34	3022-045	PASSAFILO FRONTALE	FRONTAL THREAD GUIDE
35	3022-046	PASSAFILO TESTA SINISTRO	LEFT HEAD THREAD GUIDE
36	3022-054	PASSAFILO BARRA AGO	NEEDLE BAR THREAD GUIDE
37	3022-092	PASSAFILO MORSETTO BARRA AGO	NEEDLE BAR CLAMP THREAD GUIDE
38	3022-065	CARTER FRONTALE	FRONTAL CARTER
39	3022-233	TUBETTO LIVELLO OLIO	OIL LEVEL TUBE
40	RM4B	RONDELLA M4 BOMBATA	CONVEX WASHER M4RB
41	DM4A	DADO M4 AUTOBLOCCANTE	M4 SELF-LOCKING NUT
42	069C302	SOFFIATORE AGHI	NEEDLES BLOWER
43	RM6B	RONDELLA M6 BOMBATA	CONVEX WASHER M6
44	DM6	DADO M6	M6 NUT
45	M-5AU-4	RACCORDO DRITTO	STRAIGHT CONNECTOR
46	3022-063	CARTER POSTERIORE TESTA	HEAD REAR COVER
47	TCEI M5x10	BRUGOLA M5X10	ALLEN M5X10
48	STEI M6x10G	GRANO M6X10	GRUB SCREW M6X10 CORRECT CODE FOR PART 6
49	STEI M6x5G	GRANO M6X5	GRUB SCREW M6X5
50	3064K162N	GRUPPO SUPPORTO	SUPPORT ASSEMBLY
51	3022-149	CILINDRO PIEDINO PREMI STOFFA	PRESSER FOOT CYLINDER

Pos	Codice	Descrizione	Description
52	3022-049	PISTONE CILINDRO PREMISTOFFA	CLOTH PRESSER CYLINDER
53	3022-050	ALBERO PIEDINI	CLOTH PRESSER PRESSER FEET SHAFT
54	3022-183	TAPPO INTERNO CILINDRO PIEDINO	PRESSER FOOT CYLINDER INTERNAL CAP
55	3022-183A	TAPPO ESTERNO CILINDRO PIEDINO	PRESSER FOOT EXTERNAL CYLINDER CAP
56	M-5AU-4	RACCORDO DRITTO	STRAIGHT CONNECTOR
57	OR2018	GUARNIZIONE OR	"O" RING SEAL
58	M5X30SP	SPINA ESP-1 5X30	PLUG ESP-1 5X30
59	TCBEI M5X6	BRUGOLA BOMBATA M5X6	CONVEX ALLEN M5X6
60	STEI M5x12G	GRANO M5X12	GRUB SCREW M5X12
61	RM5B	RONDELLA M5 BOMBATA	CONVEX WASHER M5
62	DM5X5	DADO M5X5	5X5 NUT
63	TCBEI M6X8	BRUGOLA BOMBATA M6X8	CONVEX ALLEN M6X8
64	OR2050	GUARNIZIONE OR	"O" RING SEAL
65	VTS-002	VITE PIANA TC M5X10	TC M5X10 FLAT SCREW
66	VTS-004	VITE TC- AVP M4X6	AVP M4X6-TC SCREW
67	TSPEI M5x10	BRUGOLA SVASATA M5X10	FLARED ALLEN M5X10
68	TSPEI M3x5	BRUGOLA SVASATA M3X5	FLARED ALLEN M3X5
69	STEI M4x16G	GRANO M4X16	GRUB SCREW M4X16G
70	STEI M5x10G	GRANO M5X10	GRUB SCREW M5X10
71	RM6	RONDELLA M6	WASHER M6
72	TE M6x14	BULLONE M6X14	BOLT M6X14
73	VTS-002	VITE PIANA TC M5X10	TC M5X10 FLAT SCREW
74	3022-281	POMELLO CARTER CROCHET	LOOPER COVER GRIP
75	TCEI M6x18	BRUGOLA M6X18	ALLEN M6X18
76	RPP8	CINGHIA 680-RPP8-20	POGGI BELT FOR 3022
77	3022-069	COPERTURA CERNIERA	COVER HINGE
78	RM3	RONDELLA M3	WASHER M3
79	TCEI M3x12	BRUGOLA M3X12	ALLEN M3X12
80	TCEI M3X10	BRUGOLA M3X10	ALLEN M3X10
81	VTS-013	GRANO FISSAGGIO AGHI	NEEDLE FIXING GRUB SCREW
82	TCBEI M4X6	BRUGOLA BOMBATA M4X6	CONVEX ALLEN M4X6
83	3022-186	RIPARO TIRAFILO	THREAD PULLER GUARD
84	3022-64A	SQUADRETTA CARTER FRONTALE	FRONTAL COVER SMALL SQUARE
85	3022-64B	MAGNETE CARTER CROCHET	LOOPER COVER MAGNET
86	VTS-007	VITE PIANA TC M3X10	TC M3X10 FLAT SCREW
87	HK0808A	CUSCINETTO	BEARINGS
88	3022-208	CARTER ZEROMAX	ZEROMAX COVER
89	173L050	CINGHIA DENTATA TIPO POGGI	POGGI TYPE COGGED BELT
90	3022-228	PULEGGIA Z10 PER ZEROMAX 3072- 3064 -LV	Z10 PULLEY FOR ZEROMAX
91	3022K070	ALBERO CENTRALE TESTA CPL	COMPLETE HEAD CENTRAL SHAFT
92	3022-044	PASSAFILO SUPERIORE TESTA	UPPER HEAD THREAD GUIDE
93	17054279	PASSAFILO TENSIONE SUPERIORE	UPPER TENSION THREAD GUIDE
94	17267971	TENSIONE SUPERIORE	UPPER TENSION
95	302-365A	PROLUNGA SUPPORTO FOTOCELLULA	PHOTOCELL SUPPORT EXTENSION
96	TCEI M3x6	BRUGOLA M3X6	ALLEN M3X6
97	302-365	LAMETTA SUPPORTO FOTOCELLULA	PHOTOCELL SUPPORT LITTLE BLADE
98	RM3B	RONDELLA M3 BOMBATA	CONVEX WASHER M3
99	DM3X3	DADO M3X3	M3X3 NUT
100	RT-01	FOTOCPELLULA	PHOTOCELL UNIT
101	TCBEI M3x16	BRUGOLA BOMBATA M3X16	CONVEX ALLEN M3X16
102	3022-192	LAMETTA FISSAGGIO FOTOCELLULA	PHOTOCELL FIXING BLADE

Pos	Codice	Descrizione	Description
103	STEI M6x075x8G	GRANO M6X0.75X8 PASSO FINO SPECIALE	GRUB SCREW M6X0.75X8 SPECIAL FINE STEP
104	090C302	BLOCCO PORTA TENSIONE X LS	TENSION HOLDER BLOCK
105	650/024	PASSAFILO	THREAD GUIDE
106	17167163	TENSIONI CPL	COMPLETE TENSIONS
107	STEI M4x5G	GRANO M4X5	GRUB SCREW M4X5G
108	VTS-023	BULLONE M6 con "DADO M8"	BOLT M6 WITH "M8 NUT"
109	106C302	ECCENTRICO	CAM
110	106C302A	RONDELLA ECCENTRICO	CAM WASHER
111	3022-234	ECCENTRICO BIELLINO	ROD LINK
112	EV7KRP017A	MANOVELLINO NUOVO 3022 CPL	COMPLETE NEW CRANK 3022
113	110K302	BIELLA ALZATA BARRA AGO CPL	PART REPLACE 110C302
114	6205ZZ	CUSCINETTI PER 3022	BEARINGS FOR 3022
115	RM4x12	RONDELLA M4X12	WASHER M4RM X12
116	302-390	ATTACCO FILETTATO 302	302 THREADED PIN
300	3022-306O	PIASTRINA FISSAGGIO GUIDA	GUIDE FIXING PLATE
301	STEI M6X075X5G	GRANO M6X0.75X5 PASSO FINO SPECIALE	GRUB SCREW M6X0.75X5 SPECIAL FINE STEP
302	3022-306B	CORPO PIEDINO	PRESSER FOOT BODY
303	3022-306H	SCARPETTA DESTRA 2"	2" RIGHT FOOT
304	3022-306N	SCARPETTA SINISTRA 1/4-1"-1/4 (1"1/2)	LEFT FOOT 1/4-1"-1/4 (1"1/2)
305	3022-306L	ATTACCO GAMBO PIEDINO	PRESSER FOOT STEM CONNECTION
306	3022-306C	GAMBA PIEDINO	PRESSER FOOT LEG
307	3022-306A	PIVOT PIEDINO	PRESSER FOOT PIVOT
308	3022-306F	RASAMENTO PIEDINO	PRESSER FOOT SHAVING
309	3022-306G	CHIUSURA PIEDINO	PRESSER FOOT CLOSING
310	3022-306P	PERNO FISSAGGIO SCARPETTA	FOOT FIXING PIN
311	VTS-020	VITE PIANA TC M3X8	TC M3X8 FLAT SCREW
312	VTS-005	VITE PIANA TC M3X5	TC M3X5 FLAT SCREW
313	DM3X3	DADO M3X3	M3X3 NUT
314	M2X20SP	SPINA ESP-1 2X20	PLUG ESP1 2X20
315	STEI M3X10G	GRANO M3X10	GRUB SCREW M3X10
316	3022-306Q	PERNI AVP M3 D.4 X 8,7	AVP M3 D.4X8,7 PINS
317	1650/456	MOLLA	SPRING
318	3022-157D	GUIDA SCARPETTA DX NEW MODEL	NEW MODEL RIGHT FOOT GUIDE
319	VTS-021	VITE TC M2,5X5	TC M2,5X5 SCREW
320	3022-157S	GUIDA SCARPETTA SX NEW MODEL	NEW MODEL LEFT FOOT GUIDE
321	DM3X3	DADO M3X3	M3X3 NUT

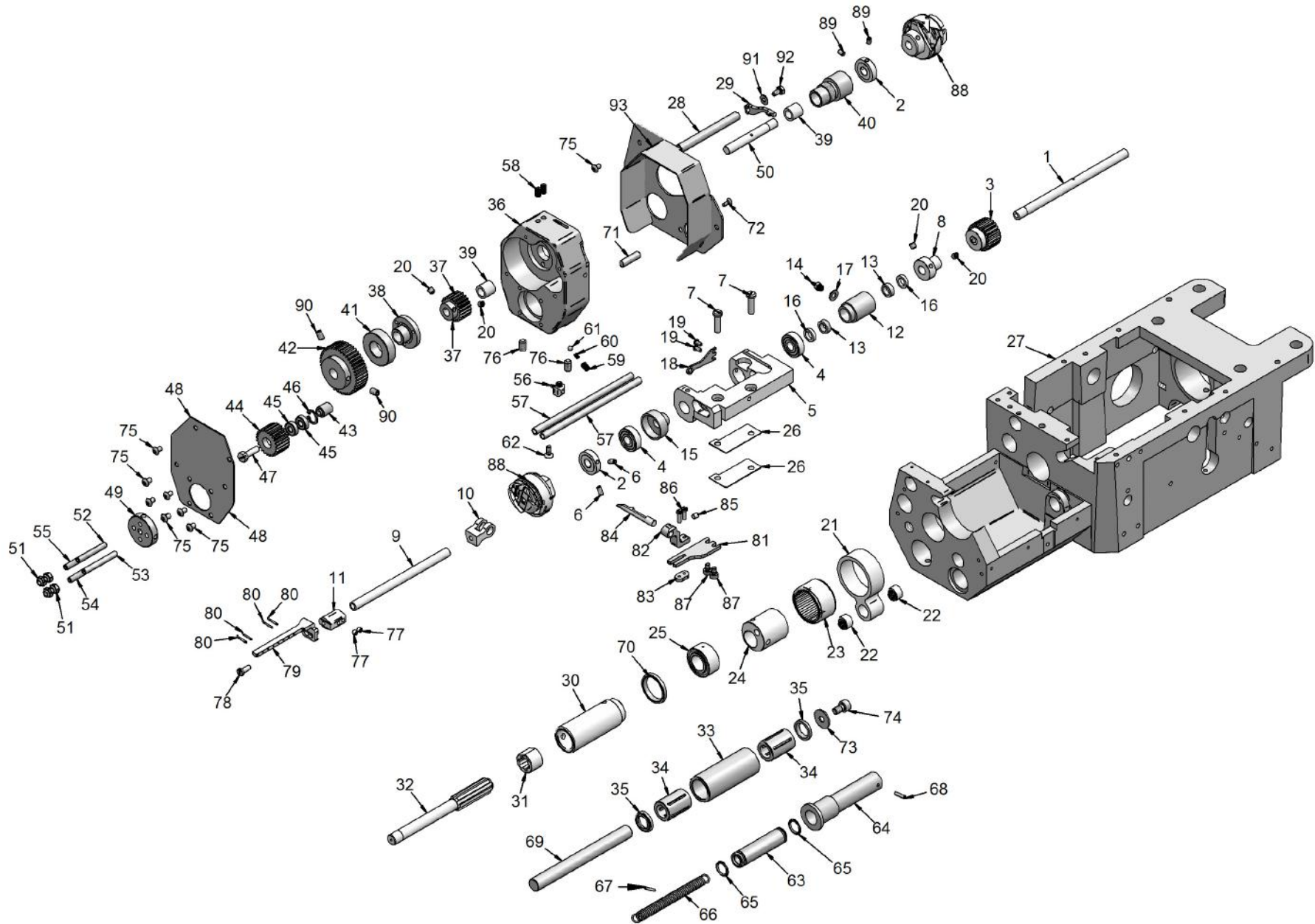




Pos	Codice	Descrizione	Description
1	3022-035	PIGNONE 8M-20 Z24	PINION 8M-20 Z24
2	3022-040	PIGNONE INFERIORE COMPLETO	COMPLETE LOW PINION
3	3022-071	ALBERO CENTRALE BASAMENTO	BED PLATE CENTRAL SHAFT
4	SCE78	CUSCINETTO	BEARING
5	3022-075	BIELLA ECCENTRICO TENSION FILO	CAM THREAD TENSION CAM CONNECTING ROD
6	HK2516.2RS	CUSCINETTO	BEARING
7	GE8D0	SNODO	ARTICULATION
8	3022-027	ALBERO TRASVERSALE CENTRALE	CENTRAL TRANSVERSAL SHAFT
9	3022-076	PERNO BIELLA CON SNODO	CONNECTING ROD PIN WITH JOINT
10	HK1012RS	CUSCINETTO CON UNA TENUTA	BEARING
11	3022-136	ALBERO CROCHET	LOOPER SHAFT
12	3022-033	MORSETTO SUPPORTO CROCHET	LOOPER SHAFT CLAMP
13	3022-137	RASAMENTO ALBERO CROCHET	LOOPER SHAFT SHEARING
14	3022-143	MORSETTO CROCHET CS	LOOPER CLAMP CHAIN STITCH
15	3022-028	RASAMENTO ALBERO TRASVERSALE	TRANSVERSAL SHAFT ADJUSTMENT TO A GIVEN
16	3022-034	BIELLA ECCENTRICO CROCHET	LOOPER CAM CONNECTING ROD
17	HK0808A	CUSCINETTO	BEARINGS
18	HK2820.2RS	CUSCINETTO	BEARING
19	3022-037	ECCENTRICO CROCHET	LOOPER ECCENTRIC
20	3022-030	LEVA ALBERO CROCHET	LOOPER SHAFT LEVER
21	1650/929	PERNO PIVOT BILANCERE TESTA	HEAD BALANCER PIVOT PIN
22	6204ZZ	CUSCINETTO	BEARING
23	3022-079	PULEGGIA	PULLEY
24	3022-121	PIASTRA BASE 201	201 BASE PLATE
25	3022-122	SERBATOIO INFERIORE	LOWER TANK
26	NA4902.2RS	CUSCINETTO A RULLI	ROLL BEARING
27	17268332	TENSIONE INFERIORE	LOWER TENSION THREAD GUIDE
28	3022-180	SOTTOBASE CESOIA	SHEAR UNDER BASE
29	3022-226	SUPPORTO TUBO LIVELLO OLIO	OIL LEVEL PIPE SUPPORT
30	3022-233	TUBETTO LIVELLO OLIO	OIL LEVEL TUBE
31	3022-031	ECCENTRICO ALBERO PRINCIPALE	MAIN SHAFT CAM
32	3022-032	FLANGIA RASAMENTO ECCENTRICO	CAM ADJUSTMENT TO A GIVEN CLEARANCE FLA
33	17414558	VITE FISSA CROCHET	LOOPER FIXED SCREW
34	3022-047	PASSAFILO CROCHET	LOOPER THREAD GUIDE
35	3022-055	PASSAFILO CENTRALE BASAMENTO	CENTRAL BED PLATE THREAD GUIDE
36	3022-091	PASSAFILO BASAMENTO	BED PLATE THREAD GUIDE
37	3022-131	CARTER POSTERIORE CROCHET 201	201 LOOPER REAR COVER
38	3022-090	COPERTURA CERNIERA ALBERO	SHAFT HINGE COVER
39	3022-080	CARTER CINGHIA MOTORE	DRIVE BELT SAFETY COVER
40	3022-002B	FUSIONE INFERIORE 3022 2 CROCHET	INFERIOR CASTING 3022 2 LOOPERS
41	M5x20SP	SPINA ESP-1 5X20	ESP-1 5X20 TYPE PLUG
42	TCEI M5x10	BRUGOLA M5X10	ALLEN M5X10
43	STEI M4x6G	GRANO M4X6	GRUB SCREW M4X6G
44	VTS-007	VITE PIANA TC M3X10	TC M3X10 FLAT SCREW
45	VTS-002	VITE PIANA TC M5X10	TC M5X10 FLAT SCREW
46	STEI M6x075X6G	GRANO M6X0.75X6 PASSO FINO SPECIALE	GRUB SCREW M6X0.75X6 SPECIAL FINE STEP
47	TCEI M5x14	BRUGOLA M5X14	ALLEN M5X14
48	17414553	VITE SUPPORTO CROCHET	LOOPER SUPPORT SCREW
49	17414553-2	VITE SUPPORTO CROCHET LUNGA	LONG SCREW LOOPER SUPPORT
50	3022-331B	TESTA PER SERBATOIO	HEAD FOR TANK
51	3022-331A	SERBATOIO ALBERO BASAMENTO	BASE SHAFT TANK

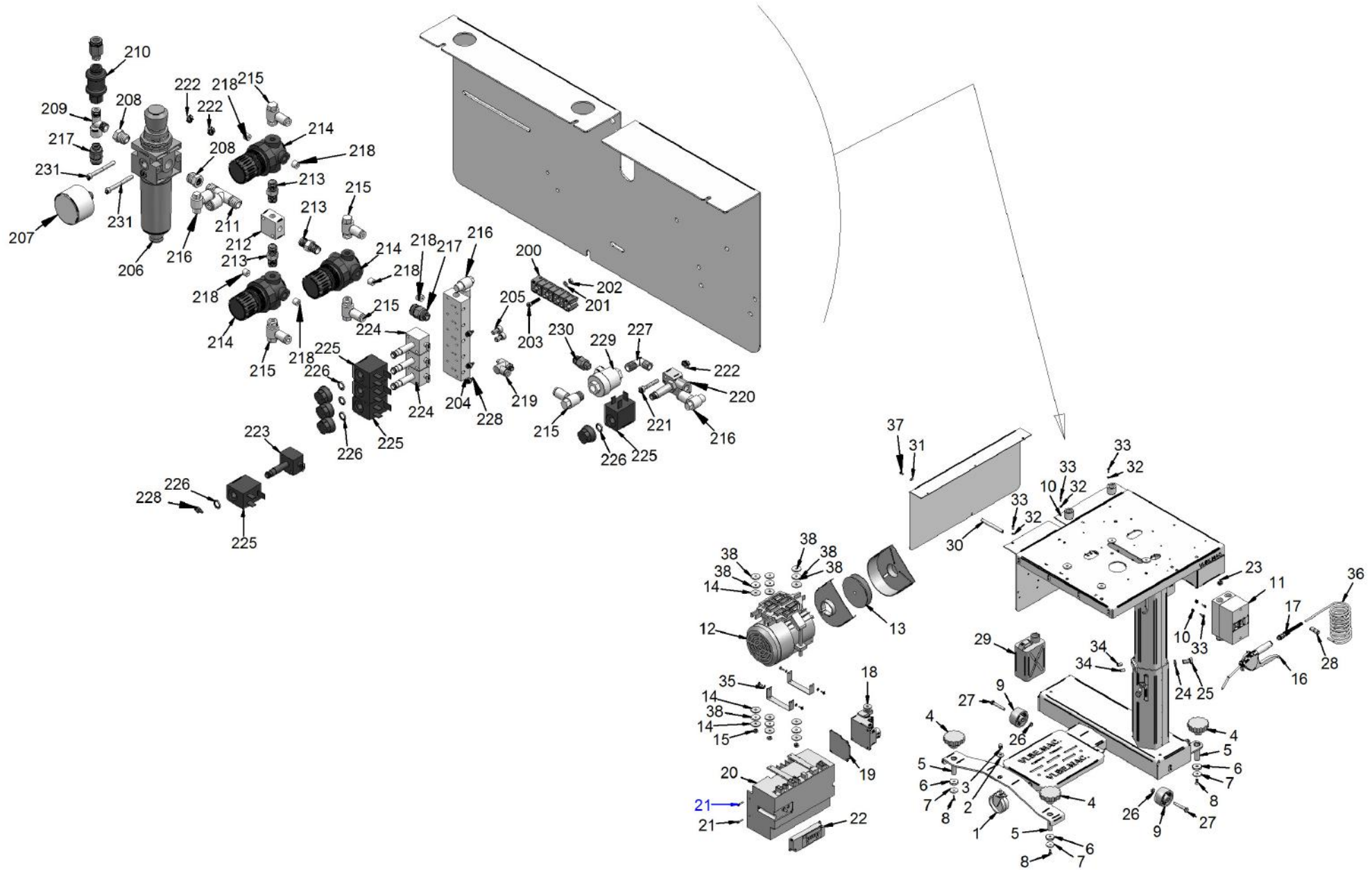
Pos	Codice	Descrizione	Description
52	G16X22X3A	ANELLO DI TENUTA VERDE	GREEN SEAL RING
53	SEEGER	ANELLO DI TENUTA	SEEGER SG16
54	STEI M5X35G	GRANO M5X35	GRUB SCREW M5X35
55	DM5X5	DADO M5X5	5X5 NUT
56	OR2062	GUARNIZIONE OR	"O" RING SEAL
57	TCBEI M4x10	BRUGOLA BOMBATA M4X10	CONVEX ALLEN M4X10
58	TCEI M10x30	BRUGOLA M10X30	ALLEN M10X30
59	TCEI M10x25	BRUGOLA M10X25	ALLEN M10X25
60	17268380A	CROCHET 3022	LOOPER 3022
61	3022-154A	SALVA AGO	NEEDLE GUARD
62	VTS-021	VITE TC M2,5X5	TC M2,5X5 SCREW
63	TE M4x30	BULLONE M4X30	BOLT M4X30
64	3022-012	STAFFA SX COLLEGAMENTO VASCHET	LEFT BRACKET BASIN CONNECTION
65	M6X20SP	SPINA ESP1-6X20 CILINDRICA	CYLINDRIC PLUG ESP1-6X20
66	3022-013	STAFFA DX COLLEGAMENTO VASCHET	RIGHT BRACKET BASIN CONNECTION
67	TCEI M6x12	BRUGOLA M6X12	ALLEN M6X12
68	TCEI M6x16	BRUGOLA M6X16	ALLEN M6X16
69	1650/986	GOMMINI SUPPORTO TESTA	HEAD SUPPORT RUBBERS- SPACERS
70	3022-001	VASCHETTA RACCOLTA OLIO	TRAY OIL
71	3022-066 ASS	CARTER ANTERIORE TENSIONI	FRONTAL COVER FOR TENSION ASSEMBLY
72	3022-66A	SQUADRETTA CARTER ANT. NUOVO	NEW ANTERIOR COVER SMALL SQUARE
73	RM3	RONDELLA M3	WASHER M3
74	TCBEI M3x6	BRUGOLA BOMBATA M3X6	CONVEX ALLEN M3X6
75	1450450	ATTACCO SCARICO OLIO	OIL DISCHARGE CONNECTION
76	3022-062	CARTER ANTERIORE CROCHET	LOOPER FRONT SAFETY COVER
77	3022-064	SQUADRETTA CARTER CROCHET	LOOPER COVER SMALL SQUARE
78	3022-069	COPERTURA CERNIERA	COVER HINGE
79	3022-084	PERNO BLOCCAGGIO ALBERO	SHAFT LOCKING PIN
80	STEI M5x5G	GRANO M5X5	GRUB SCREW M5X5
81	3022-389	SPESSORE PER FORCELLA GUIDA BIELLA	SHIM FOR CONNECTING ROD GUIDING STAPLE
82	3022-388	FORCELLA GUIDA BIELLA	CONNECTING ROD GUIDING STAPLE
83	RM8	RONDELLA M8	WASHER M8
84	STEI M6x45G	GRANO M6X45	GRUB SCREW M6X45
85	3022-390	PATTINO PER GUIDA BIELLA	GUIDING ROD SLIDING BLOCK
86	TCEI M3X10	BRUGOLA M3X10	ALLEN M3X10
87	3022-391	LAMA GUIDA BIELLA	ROD GUIDING BLADE
88	TCEI M4x12	BRUGOLA M4X12	ALLEN M4X12
89	STEI M5x25G	GRANO M5X25	GRUB SCREW M5X25
90	VTS-003	VITE PIANA TC M4X10	TC M4X10 FLAT SCREW
91	STEI M6x075x8G	GRANO M6X0.75X8 PASSO FINO SPECIALE	GRUB SCREW M6X0.75X8 SPECIAL FINE STEP
92	3022-354D	GUIDA TESSUTO DX	RIGHT TISSUE GUIDE
93	3022-354S	GUIDA TESSUTO SX	LEFT TISSUE GUIDE
94	VTS-005	VITE PIANA TC M3X5	TC M3X5 FLAT SCREW
95	3022-353	FISSAGGIO GUIDA TESSUTO	TISSUE GUIDE FIXING
96	3022-190	AMMORTIZZATORE BACINELLA OLIO	OIL BASIN CUSHION GEAR
97	3022-387	SUPPORTO DOPPIO OLIATORE	DOUBLE LUBRICATOR SUPPORT
98	OLIATOREEUN140	OLIATORE UNI 40	OILER UNI40
99	HK2016.2RS	CUSCINETTO A RULLINI 20X26X16	ROLL BEARING 20X26X16
100	3022-094	BIELLA ECCENTRICO ALZATA GRIFF	JAW LIFTING CAM CONNECTING ROD
101	3022-104C	SUPPORTO PLACCA 201 MAXI FLX	201 MAXI FLX SUPPORT PLATE
102	3022-400	PLACCA AGO 201 1"7/8 6 AGHI	6 NEEDLES 201 1"7/8 NEEDLE PLATE

Pos	Codice	Descrizione	Description
103	HK1216.2RS	CUSCINETTO	BEARING
104	3022-097	ALBERO MOVIMENTO GRIFFA 201	201 FEED DOG MOVEMENT SHAFT
105	100C302A	INGRANAGGIO Z48 m1 x 3022LVS	GEAR Z48 m1 X3022lvs
106	3022-096	SUPPORTO MOVIMENTO GRIFFA 201	201 FEED DOG MOVEMENT SUPPORT
107	HK1015AS1	CUSC.A RULLI FORO LUBRIFICATO	ROLL BEARING OILED HOLE
108	RM5	RONDELLA M5	WASHER R5 M5
109	3022-095	SUPPORTO PORTA GRIFFA 201	201 FEED DOG HOLDER SUPPORT
110	STEI M6x075x10G	GRANO M6X0.75X10	GRUB SCREW M6X0.75X10
111	3022-098	ALBERO ALZATA GRIFFA 201	201 FEED DOG LIFTING SHAFT
112	3022K102	BIELLA ALZATA GRIFFA 201 CPL	COMPLETE 201JAW LIFTING ROD
113	3022-100	SUPPORTO GRIFFA 201	201 FEED DOG SUPPORT
114	3022-399	GRIFFA 201 1"7/8 6 AGHI	6 NEEDLES 201 FEED DOG 1"7/8
115	17200100-2	VITE FISSA PLACCA AGO	FIXING NEEDLE PLATE SCREW
116	3022-099	BIELLA MOVIMENTO GRIFFA 201	201 FEED DOG MOVEMENT CONNECTING ROD
117	3022-039	BIELLA ECCENTRICO SUPERIORE	UPPER CAM CONNECTING ROD
118	3022-074A	SUPPORTO ESTERNO ECCENTRICO	CAM EXTERNAL SUPPORT
119	3022-074D	SLITTA ECCENTRICO TESTA	HEAD CAM SLIDE
120	3022-074B	FISSAGGIO SLITTA ECCENTRICO	CAM FIXING SLIDE
121	3022-074C	CAMME ECCENTRICO TESTA	HEAD ECCENTRIC CAMS
122	3022-074E	PERNO SLITTA ECCENTRICO TESTA	HEAD CAM SLIDING PIN
123	3022-074F	RASAMENTO ECCENTRICO TESTA	HEAD CAM ADJUSTMENT TO A GIVEN CLEARANCE
124	M20RB	RONDELLA A TAZZA	CUP WASHER
125	DM6	DADO M6	M6 NUT
126	3022-366	CARTER POSTERIORE BASAMENTO LV	LV BASE REAR COVER
127	TCBEI M5x8	BRUGOLA BOMBATA M5X8	CONVEX ALLEN M5X8
128	STEI M6x075X5G	GRANO M6X0.75X5 PASSO FINO SPECIALE	GRUB SCREW M6X0.75X5 SPECIAL FINE STEP
129	TCEI M3x6	BRUGOLA M3X6	ALLEN M3X6
130	3022-041A	CARTER FRONTALE BASAMENTO 201	201 BASE FRONTAL COVER
131	TCBEI M4x10	BRUGOLA BOMBATA M4X10	CONVEX ALLEN M4X10
132	M-5AU-4	RACCORDO DRITTO	STRAIGHT CONNECTOR



Pos	Codice	Descrizione	Description
1	302-352A	ALBERO CROCHET 3022 FLX / CS /LS	NEW 3022 LOOPER SHAFT
2	1650/909	RASAMENTO CROCHET	ROTARY HOOK TRIMMING
3	096C302	INGRANAGGIO MOD.1 Z24	GEAR MODEL 1 Z24
4	608ZZQE	CUSCINETTO 608ZZQE (ZV)	BEARING 608ZZQE (ZV)
5	302-350A	SUPPORTO ALBERO DERAGLIATORE NUOVO	NEW DERAILMENT SHAFT SUPPORT
6	STEI M4x8G	GRANO M4X8	GRUB SCREW M4X8
7	VTS-002	VITE PIANA TC M5X10	TC M5X10 FLAT SCREW
8	3022-398	RASAMENTO CROCHET ROTATIVO	ROTATORY HOOK ADJUSTMENT TO A GIVEN CLE
9	3022-086	ALBERO DERAGLIATORE	DERAILER SHAFT
10	3022-087	ATTACCO ALBERO DERAGLIATORE	DERAILER SHAFT CONNECTION
11	3022-088	ATTACCO DERAGLIATORE	DERAILER CONNECTION
12	3022-432	SERBATOIO OLIO CROCHET ROTATIVO	LOOPER OIL TANK
13	BOC8X12X4	BOCCOLA	FERRULE
14	M-5AU-4	RACCORDO DRITTO	STRAIGHT CONNECTOR
15	3022-431	BOCCOLA SUPPORTO CUSCINETTO CROCHET ROT.	LOOPER BEARING SUPPORT BUSHING
16	G8X12X3	PARAOLIO X 3022 PUNTO AN.	OIL SEAL FOR 3022 LOCK STITCH
17	RM5	RONDELLA M5	WASHER R5 M5
18	3022-433	FISSAGGIO OLIATORE CENTRALE	CENTRAL OILER FIXING
19	TCBEI M3x6	BRUGOLA BOMBATA M3X6	CONVEX ALLEN M3X6
20	STEI M5x5G	GRANO M5X5	GRUB SCREW M5X5
21	3022-034	BIELLA ECCENTRICO CROCHET	LOOPER CAM CONNECTING ROD
22	HK0808A	CUSCINETTO	BEARINGS
23	HK2820.2RS	CUSCINETTO	BEARING
24	3022-037	ECCENTRICO CROCHET	LOOPER ECCENTRIC
25	NA4902.2RS	CUSCINETTO A RULLI	ROLL BEARING
26	3022-153	TAPPO SERBATOI	TANKS CAP
27	3022-002B	FUSIONE INFERIORE 3022 2 CROCHET	INFERIOR CASTING 3022 2 LOOPERS
28	3022-377	PERNO PER FERMACESTELLO	BASKET RETAINER PIN
29	3022-376	FERMA CESTELLO	BASKET RETAINER
30	3022-370	MANICOTTO PER GIUNTO ALBERO CENTRALE	CENTRAL SHAFT JOINT COLLAR
31	1650/579LA	BOCCOLA GIUNTO ALBERO LAVORATA 14mm	PROCESSED SHAFT JOINT LENGTH 14 mm
32	3022-383	BARRA SCANALATA X GIUNTO CON GRIFFA	CHASED BAR FOR JUNCTION WITH FEED DOG
33	3022-374	BOCCOLA PER CUSCINETTI	BEARING FERRULE
34	KH1228B	CUSCINETTO	BEARING
35	G12X19X3	PARAOLIO	OIL GUARD
36	3022-373	SCATOLA DI RINVIO	TRANSMISSION BOX
37	3022-403	INGR. PERNO CROCHET MOD1Z22 A DISEGNO	1Z22 MOD LOOPER PIN GEAR
38	3022-371	FLANGIA RINVIO ALBERO CENTRALE	CENTRAL SHAFT TRANSMISSION COLLAR
39	HK08122RS	CUSCINETTI	BEARINGS
40	3022-369	BOCCOLA SUPPORTO CROCHET	LOOPER SUPPORT BUSHING
41	6002.2Z	CUSCINETTO	BEARING
42	3022-405	INGR. PERNO CENTRALE MOD1Z44 A DISEGNO	1Z44 MOD CENTRAL PIN GEAR
43	3022-408	PERNO RUOTA FOLLE SCATOLA DI RINVIO	IDLE WHEEL PIN TRANSMISSION BOX
44	3022-404	INGR. PERNO CROCHET MOD1Z24	1Z24 MOD LOOPER PIN GEAR
45	619/5ZZ	CUSCINETTO RADIALE A SFERE 5X13X4	5X13X4 SPHERE RADIAL BALL BEARING
46	SEG13/1	SEEGER PER FORO DIAM. 13 (PER INTERNI)	HOLE SEEGER 13 DM (INDOOR)
47	17414553	VITE SUPPORTO CROCHET	LOOPER SUPPORT SCREW
48	3022-379	CARTER CHIUSURA FRONTALE	FRONTAL CLOSING COVER
49	3022-375	REGOLATORE PRE-SETTING	PRE SETTING REGULATING
50	1650/203	ALBERINO CROCHET	ROTARY HOOK SHAFT
51	DM5A	DADO M5 AUTOBLOCCANTE	M5 SELF-LOCKING NUT

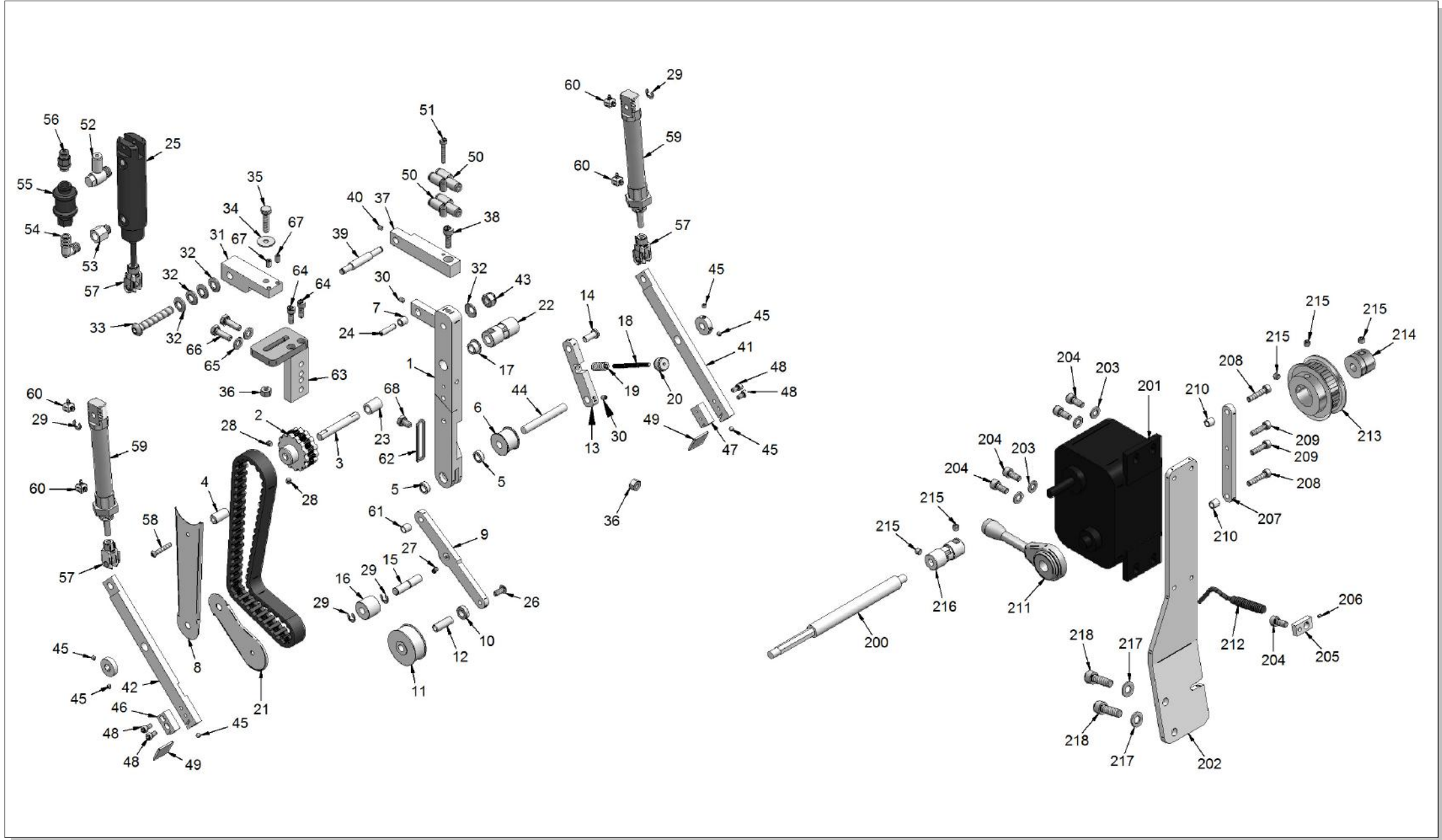
Pos	Codice	Descrizione	Description
52	STEI M5X35G	GRANO M5X35	GRUB SCREW M5X35
53	STEI M5X40G	GRANO M5X40	GRUB SCREW M5X40
54	STEI M5x20G	GRANO M5X20	GRUB SCREW M5X20
55	STEI M5x16G	GRANO M5X16	GRUB SCREW M5X16
56	M-5ALU-4	RACCORDO	ELBOW CONNECTOR
57	3022-372	TUBETTO GUIDA OLIO/ARIA	OIL/AIR GUIDE TUBE
58	STEI M5X6G	GRANO M5X6	GRUB SCREW M5X6
59	STEI M5X5G	GRANO M5X5	GRUB SCREW M5X5
60	1650/456	MOLLA	SPRING
61	1650/455	SFERA IN ACCIAIO 3/16"	BALL
62	TSPEI M4x10	BRUGOLA SVASATA M4X10	FLARED ALLEN M4X10
63	3022-406	PISTONE PER MOVIMENTO SCATOLA DI RINVIO	CYLINDER FOR TRANSMISSION BOX MOVING
64	3022-407	CILINDRO PER MOVIMENTO SCATOLA DI RINVIO	CYLINDER FOR TRANSMISSION BOX MOVING
65	OR114	GUARNIZIONE OR	"O" RING SEAL
66	M1.2X8.4X60	MOLLA TRAZIONE X 3022 DOPPIO CROCHET	SPRING
67	2X10SP	SPINA 2X10SP	2X10 SP PLUG
68	STEI M3x12G	GRANO M3X12	GRUB SCREW M3X12
69	3022-386	ALBERO GUIDA TESTINA MOBILE L.118	L.118 MOVABLE HEAD GUIDE SHAFT
70	G22X28X4B	ANELLO DI TENUTA VERDE	GREEN SEAL RING
71	3022-378C	PERNO PRE-SETTING	PRE SETTING PIN
72	TSPEI M3x8	BRUGOLA SVASATA M3X8	FLARED ALLEN M3X8
73	RM6x18	RONDELLA M6X18	WASHER M6X18
74	TCEI M6x10	BRUGOLA M6X10	ALLEN M6X10
75	TCBEI M4x10	BRUGOLA BOMBATA M4X10	CONVEX ALLEN M4X10
76	STEI M6x10G	GRANO M6X10	GRUB SCREW M6X10 CORRECT CODE FOR PART 6
77	VTS-013	GRANO FISSAGGIO AGHI	NEEDLE FIXING GRUB SCREW
78	VTS-003	VITE PIANA TC M4X10	TC M4X10 FLAT SCREW
79	3022-171	ALLARGACAPPIO CS 1"-1"1/2	1"-1" 1/2 CHAIN STITCH SPREADER
80	3022-172	BAFFO PER ALLARGACAPPIO	PIN FOR SPREADER
81	3022-394	PROLUNGA SUPPORTO FERMACESTELLO	BASKET RETAINER SUPPORT EXTENSION
82	3022-393	SUPPORTO FERMACESTELLO	BASKET RETAINER SUPPORT
83	3022-395	PIASTRINA FISSAGGIO SUPP. FERMACESTELLO	BASKET RETAINER SUPPORT FIXING PLATE
84	1650/124	FERMACESTELLO	BASKET RETAINER
85	VTS-010	VITE SPECIALE	SPECIAL SCREW
86	VTS-007	VITE PIANA TC M3X10	TC M3X10 FLAT SCREW
87	TCEI M4x6	BRUGOLA M4X6	ALLEN M4X6
88	1650/906	CROCHET 1650/2650 COMPLETO	COMPLETE ROTARY HOOK 1650/2650
89	STEI M4x6G	GRANO M4X6	GRUB SCREW M4X6G
90	STEI M5x8G	GRANO M5X8	GRUB SCREW M5X8
91	RM4	RONDELLA M4	WASHER M4
92	TE M4x8	BULLONE M4X8	BOLT M4X8
93	3022-378	CARTER PROTEZIONE RINVIO	TRANSMISSION GUARD COVER



Pos	Codice	Descrizione	Description
1	360M12-0G050	RUOTE GIREVOLI UNIVERSALI	UNIVERSAL PIVOT TYPE WHEELS
2	RM8x24	RONDELLA M8X24	WASHER M8X24
3	DM8C	DADO M8 CIECO	M8 BLIND NUT
4	GMLB70M16	POMELLO	KNOB
5	ST-C-024	PERNO FILETTATO X 3022	THREADED PIN FOR 3022
6	ST-C-023	PIEDINO STABILIZZATORE	STABILIZER PRESSER FOOT
7	3022-134	RONDELLA IN VULCOLAN	VULCOLAN WASHER
8	TSPEI M6x16	BRUGOLA SVASATA M6X16	FLARED ALLEN M6X16
9	RON-G-060	RUOTA NYLON + BUSSOLA	NYLON WHEEL+BUSHING
10	DM4F	DADO M4 FLANGIATO	M4 FLANGED NUT
11	MO12/1650	INTERRUTTORE MONOFASE	MONOPHASE SWITCH
12	XCG55420Y	MOTORE "SERIE G"	SERVO MOTOR "G-SERIES"
13	MOP85	PULEGGIA DIAMETRO 85	PULLEY GAUGE 85
14	RM8x32	RONDELLA M8X32	WASHER M8X32
15	DM8	DADO M8	NUT M8
16	R0715	PISTOLA ARIA	AIR GUN
17	50 6/4-1/4	RACCORDO	CONNECTOR
18	XC-GL-2	LEVAR UNIT FOR LIMISERVO XCGMFY2005	LEVAR UNIT FOR LIMISERVO XCGMFY2005
19	3022-413	CARTER DI CHIUSURA	CLOSING COVER
20	XCGMFY2005	CENTRALINA "SERIE G"	"G-SERIES" CONTROL BOX
21	TCEI M4x20	BRUGOLA M4X20	ALLEN M4X20
22	XC-G10S	PANEL WITH SHORT CABLE "SERIE G"	PANEL WITH SHORT CABLE "G SERIES"
23	GMVPZ22M410	POMELLO	KNOB
24	RM12	RONDELLA M12	WASHER M12
25	TE M12x25	BULLONE M12X25	BOLT M12X25
26	DM8	DADO M8	NUT M8
27	TE M8x55	BULLONE M8X55	BOLT M8X55
28	KQH06-00	RACCORDO	CONTACT
29	VF1-001	TANICHE D'ASPIRAZIONE	SUCTION TANKS
30	ST-C-13C	PERNO STAFFA PORTA VALVOLE	VALVE HOLDER STIRRUP PIN
31	RM4x12	RONDELLA M4X12	WASHER M4RM X12
32	RM4	RONDELLA M4	WASHER M4
33	TCEI M4x12	BRUGOLA M4X12	ALLEN M4X12
34	STEI M8x16G	GRANO M8X16	GRUB SCREW M8X16
35	RM5	RONDELLA M5	WASHER R5 M5
36	TRS64/21	TUBO SPIRALE RILSAN 6X4	SPIRAL TUBE RILSAN 6X4
37	TCEI M4x10	BRUGOLA M4X10	ALLEN M4X10
38	3022-134A	RONDELLA MOTORE	DRIVING WASHER
200	MAMMUT	CONNETTORE MAMMUT 1 ELEMENTO	1 ELEMENT MAMMUT CONNECTOR
201	RM3	RONDELLA M3	WASHER M3
202	DM3X3	DADO M3X3	M3X3 NUT
203	TCEI M3x16	BRUGOLA M3X16	ALLEN M3X16
204	ATM-130	BASSETTA PORTA VALVOLE	VALVE HOLDER BASE
205	TCEI M5x8	BRUGOLA M5X8	ALLEN M5X8
206	FR1/4	RIDUTTORE DI PRESSIONE	PRESSURE REDUCER
207	MM0/6	MANOMETRO 0/6 1/8"	0/6 1/8" MANOMETER
208	A4 1/8-1/4	RACCORDO MW A4 1/8-1/4	MW A4 1/8-1/4 CONTACT
209	A18 1/8-1/8	RACCORDO MW A18 1/8 1/8	MW A18 1/8 1/8 CONTACT
210	VMS1181/8	VALVOLA/RUBINETTO ARIA 1/8 1/8 OTTONE	VALVE / AIR COCK 1/8 1/8
211	A17 1/8-1/8	RACCORDO A17 1/8 1/8	A17 1/8 1/8 CONTACT
212	3033 1/8	RIPARTITORE DA 1/8	1/8 DISTRIBUTION FRAME



Pos	Codice	Descrizione	Description
213	A2 1/8-1/8	RACCORDO	CONNECTOR
214	R07-100-RNKG	RELIVING	RELIEVING
215	804 4 1/8	RACCORDO	CONNECTOR
216	804 6 1/8	RACCORDO	CONNECTOR
217	R1 6-1/8	RACCORDO	CONTACT
218	TTE8	TAPPO 1/8 ESAGONALE A BRUGOLA	HEXAGONAL ALLEN CAP 1/8
219	AS1301F-M5-04	RACCORDO	CONNECTOR
220	PA130205	PILOTA FERRO MOLLA DURA	PILOT
221	TCEI M4x25	BRUGOLA M4X25	ALLEN M4X25
222	DM4F	DADO M4 FLANGIATO	M4 FLANGED NUT
223	PA160352	PIL.FORO 1,8 MOL.TEN.TAP.FOR.	VALVE WITH SOFT SPRING 1,8 HOLE
224	PA160370	PILOTA FORO 1,8 MOLLA NORMALE	NORMAL SPRING 1,8 HOLE PILOT
225	SA13 24CC	BOBINA 3 W 24V DC UNIVERSALE	UNIVERSAL BOBBIN 3 W 24V DC
226	OR2031	ANELLO GUARNIZIONE	O RING
227	A15 1/8	RACCORDO	CONNECT
228	M-5AU-4	RACCORDO DRITTO	STRAIGHT CONNECTOR
229	FD3/8	VSR 1/8 ADIPRENE	QUICK EXHAUST
230	R1 4-1/8	RACCORDO	CONNECTOR
231	TCEI M4x40	BRUGOLA M4X40	ALLEN M4X40



Pos	Codice	Descrizione	Description
1	302-394	MONTANTE PULLER	PULLER SUPPORT
2	261/509	RULLO SUPERIORE Z14	UPPER CYLINDER Z14
3	261/032	ALBERO PIGNONE SUPERIORE Z14	UPPER PINION SHAFT Z14
4	261/034	DISTANZIALE	SPACER
5	BOC4,5X8X12	BOCCOLA	FERRULE
6	261/506	RULLO CENTRALE PULLER	PULLER CENTRAL ROLLER
7	BOC5x8x8	BOCCOLE SINT. BRONZO 5X8X8	BRONZE SINT. FERRULE 5X8X8
8	261/038	CARTER LUNGO PULLER	PULLER LONG COVER
9	3022-291	LEVA PULLER	FASTENING FOR PRESSER FOOT
10	3022-292A	RONDELLA DISTANZIALE	SPACER WASHER
11	3022-292	RULLO TEFLON INF. PULL. LEVIS	LEVI'S PULLER INFERIOR TEFLON CYLINDER
12	261/505	PERNO RULLO INFERIORE	LOWER CYLINDER PIN
13	261/026	LAMA TENDICINGHIA	BELT STRETCHER BLADE
14	261/025	PIVOT LAMA TENDICINGHIA	BELT STRETCHER BLADE PIVOT
15	261/044	PERNO RULLO TENDICINGHIA	BELT STRETCHER CYLINDER PIN
16	261/507	RULLO TENDI CINGHIA	BELT STRETCHER CYLINDER
17	BOC8x12x16C	BOCCOLA CON COLLARE	FERRULE WITH COLLAR
18	261/023	BARRA FILETTATA M4	THREADED BAR M4
19	261/024	MOLLA TENDICINGHIA	BELT STRETCHER SPRING
20	POMELLO	POMELLO ZIGRINATO FORO M4	MILLED GRIP HOLE M4
21	007CG82	CARTER INFERIORE COPRICINGHIA	BELTCOVER LOWER CRANKCASE
22	261/045	GIUNTO CARDANICO DA 8	CARDAN JOINT OF 8
23	BOC8x12x16	BOCCOLE SINT. BRONZO 8X12X16	BRONZE FERRULE 8X12X16
24	M5X20SP	SPINA ESP-1 5X20	ESP-1 5X20 TYPE PLUG
25	22/35	CILINDRO 22/35 #16455/C#	CYLINDER 22/35 #16455/C#
26	TCBEI M5x12	BRUGOLA BOMBATA M5X12	CONVEX ALLEN M5X12
27	STEI M4X6G	GRANO M4X6	GRUB SCREW M4X6G
28	STEI M6X0.75X5G	GRANO M6X0.75X5 PASSO FINO SPECIALE	GRUB SCREW M6X0.75X5 SPECIAL FINE STEP
29	SEEGER	ANELLO DI TENUTA	SEEGER SG16
30	STEI M4x6G	GRANO M4X6	GRUB SCREW M4X6G
31	003CG82	STAFFA SUPERIORE PULLER	PULLER UPPER BRACKET
32	RM8B	RONDELLA M8 BOMBATA	CONVEX WASHER M8
33	TCBEI M8x50	BRUGOLA BOMBATA M8X50	CONVEX ALLEN M8X50
34	RM6x18	RONDELLA M6X18	WASHER M6X18
35	TE M6x25	BULLONE M6X25	BOLT M6X25
36	DM6	DADO M6	M6 NUT
37	302-302	SUPPORTO CILINDRI	CYLINDER SUPPORT
38	TCEI M6x18	BRUGOLA M6X18	ALLEN M6X18
39	302-312	PERNO SUPPORTO CILINDRI LAT.	LATERAL CYLINDERS PIN SUPPORT
40	STEI M4x5G	GRANO M4X5	GRUB SCREW M4X5G
41	302-300	SUPPORTO COLTELLO DESTRO LEWIS	LEVI'S KNIFE SUPPORT (RIGHT)
42	302-300A	SUPPORTO COLTELLO SINISTRO	KNIFE SUPPORT (LEFT)
43	DM8A	DADO M8 AUTOBLOCCANTE	M8 SELF-LOCKING NUT
44	302-311	PERNO CENTRALE	CENTRAL PIN
45	STEI M4x4G	GRANO M4X4	GRUB SCREW M4X4G
46	412-0003A	BLOCCHETTO REG.COLTELLO SX	LEFT KNIFE REGULATING ADJUSTING BLOCK
47	412-0003	BLOCCHETTO REG.COLTELLO DX	RIGHT KNIFE REGULATING ADJUSTING BLOCK
48	TCEI M4X8	BRUGOLA M4X8	ALLEN M4X8
49	011CG104	COLTELLO	BLADE
50	KQU04-00	RACCORDO	CONNECTOR
51	TCEI M4x25	BRUGOLA M4X25	ALLEN M4X25

Pos	Codice	Descrizione	Description
52	804 4 1/8	RACCORDO	CONNECTOR
53	A5 1/8-1/8	RACCORDO	CONNECTOR
54	A15 1/8	RACCORDO	CONNECT
55	VMS1181/8	VALVOLA/RUBINETTO ARIA 1/8 1/8 OTTONE	VALVE / AIR COCK 1/8 1/8
56	R1 4-1/8	RACCORDO	CONNECTOR
57	G6	FORCELLA M6 CON CLIPS	M6 STAPLE WITH CLIPS
58	TCBEI M4x25	BRUGOLA BOMBATA M4X25	CONVEX ALLEN M4X25
59	24N2A16A050	CILINDRO	CYLINDER
60	M-5ALU-4	RACCORDO	ELBOW CONNECTOR
61	PAP0608P10	BUSSOLA	BUSHING
62	3022-361	FERMO LEVA PULLER	PULLER LEVER STOPPER
63	3022-155	STAFFA SUPPORTO PULLER 201	201 PULLER SUPPORT BRACKET
64	TCEI M5x14	BRUGOLA M5X14	ALLEN M5X14
65	RM6	RONDELLA M6	WASHER M6
66	TE M6x20	BULLONE M6X20	BOLT M6X20
67	STEI M5x10GP	GRANO M5X10 A PUNTA	GRUB SCREW M5X10 POINTED
68	TE M6x10	BULLONE M6X10	BOLT M6X10
200	261/052	GIUNTO COMPENSATORE COMPLETO	COMPLETE COMPENSATOR JOINT
201	E2ID/2262	VARIATORE ZEROMAX TIPO E2ID PER 2262HP	E2ID TYPE ZEROMAX VARIATOR FOR 2262HP
202	3022-211	LAMA FISSAGGIO ZEROMAX	FIXING ZEROMAX BLADE
203	RM6	RONDELLA M6	WASHER M6
204	TCEI M6x14	BRUGOLA M6X14	ALLEN M6X14
205	3022-232	SUPPORTO SENSORE NORM. 2 AGHI	2 NEEDLES NORMAL SENSOR SUPPORT
206	STEI M3x4G	GRANO M3X4	GRUB SCREW M3X4 NEW CODE FOR M3X4G
207	3022-209	LAMA FISSAGGIO CARTER ZEROMAX	ZEROMAX COVER FIXING BLADE
208	TCEI M5x25	BRUGOLA M5X25	ALLEN M5X25
209	TCEI M5x20	BRUGOLA M5X20	ALLEN M5X20
210	3022-210	PERNO LAMA FISS. CARTER ZE.MAX	ZEROMAX COVER FIXING BLADE PIN
211	LEVAE2	LEVA REGOLAZIONE ZEROMAX	ZEROMAX REGULATION LEVER
212	SENS-NPNN0		
213	261/021	PULEGGIA 20 DENTI X ZEROMAX	20 TEETH PULLEY FOR ZEROMAX
214	261/022	BUSSOLA	BUSH
215	STEI M6x5G	GRANO M6X5	GRUB SCREW M6X5
216	261-020	CARDANO LATO ZEOMAX	ZEROMAX SIDE CARDANIC JOINT
217	RM8	RONDELLA M8	WASHER M8
218	TCEI M8x25	BRUGOLA M8X25	ALLEN M8X25

**VI.BE.MAC. Spa**  
**Via Monte Pastello, 7/i - 37057 S. GIOVANNI LUPATOTO - VERONA, ITALY**  
**Tel. +39.045.8778151/52 - Fax +39.045.8779024/8779211 - P.IVA 01264050236**  
**[vibemac@vibemac.com](mailto:vibemac@vibemac.com)**